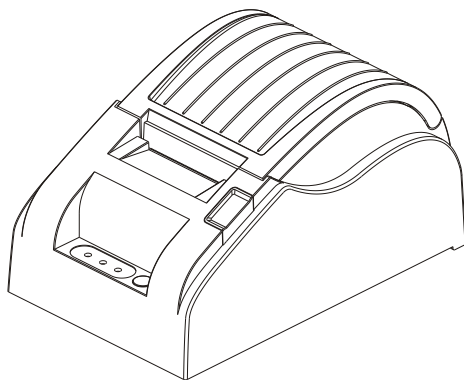




User Manual

EC-5890X

THERMAL RECEIPT PRINTER



Safety Notice:

- * Don't touch the Head of printer with anything.
- * Don't touch the cutter blade.
- * Don't bend the power cord excessively or place any heavy objects onto it.
- * Don't use the printer when it is out of order. This can cause a fire or and electrocution.
- * Only use the power cord excessively or place any heavy objects onto it.
- * When connecting or disconnecting the plug, always hold the plug-not the cord.
- * Keep the desiccant out of children's reach.
- * Use only approved accessories and do not try to disassemble, repair or remodel it for yourself.
- * Install the printer on the stable surface. Choose firm, level surface where avoid vibration.
- * Don't let water or other foreign objects in the printer.
- * Don't connect a telephone line into the peripheral drive connector.
- * We recommend that you unplug the printer from the power outlet if no use it for long periods .

Available fields:

- * Print POS system Receipts
- * Print EFT POS system Receipts
- * Print Gym, Post, hospital, civil aviation system Receipts
- * Print Inquiry, Service system Receipts
- * Print Instrument test Receipts
- * Print Tax, Tab Receipts

Main Features:

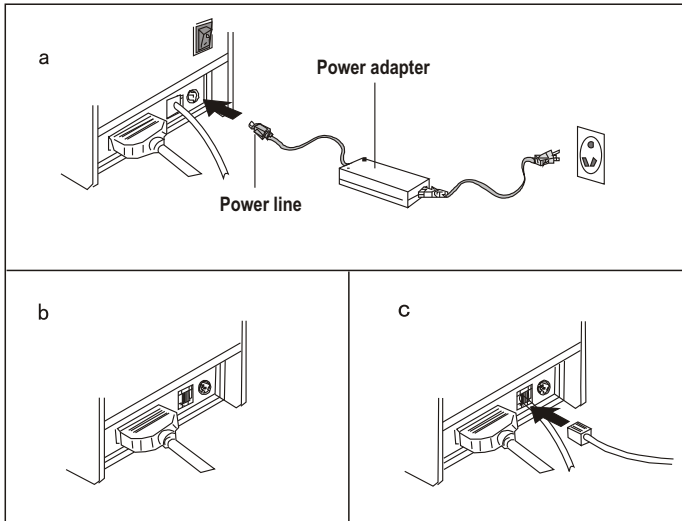
- * Support Ethernet printing
- * Support 60K Bytes NV Logo download print, which is convenient for storing and printing Logo or trademarks
- * Support up to 25 international language character sets.
- * Optional GB18030 Chinese character set
- * Inpect printing status
- * Support Parallel, Serial, USB, Ethernet interfaces.
- * Additional ESC/POS commands than old version models. More compatibility, more convenient, flexible to operate.
- * Support various print effects for characters, such as 1-8 class enlarged, bold, underline, 90-degree rotation, inversion, contrary and etc.
- * The print speed of bitmap character is the same with high print speed by built-in font.

Technical Specification :

Print method	Thermal line printing
Print speed	90mm/ secretary.
Paper width	57.5 ± 0.5mm
Print columns	384dots/line
Character	ANK Character: Font A: 12×24dots Simplify/Traditional: 24×24 dots
Print command	Compatible with ESC/POS
Interface	Parallel/Serial/Wireless/USB/Ehernet
Barcode mode	UPC-A/UPC-E/JAN13(EAN13)/JAN8(EAN8)/ CODE39/ITF/CODABAR/CODE93/CODE128
Reliability print	50Km
Paper thickness	0.06~0.08mm
Adaptor power input	AC 110V/220V, 50~60Hz
Powersupply	DC 12V/3A
Power adapter	Input:AC110V/220V,50 ~ 60HZ Output:DC 12V/3A
Cash Drawer	DC 12V/1A
Work Temperature	0~45℃ Dampness: 10~80%
Storage temperature	-10~50℃, Dampness: 10~90%

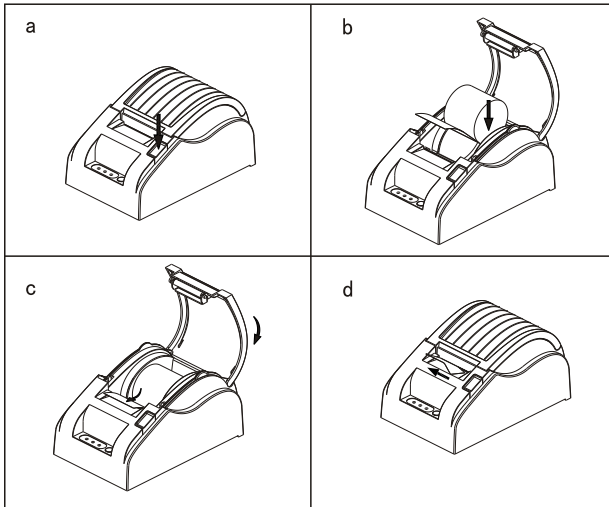
Connection

- Connect the adapter cable to power connector of the printer.
- Connect the interface cable to the connector on the rear panel of the printer.
- Connect the cash drawer's RJ-11 phone jack to the connector on the rear panel.



Paper Roll Installation

- Open the top cover, install the paper roll as the picture showing direction.
- Set the paper roll into the hollow, and pull on the leading edge of the paper towards you as shown.
- Press the center of printer cover firmly to prevent paper miss loading.
- Tear off the paper outside the cover as shown.



Print character:

ANK Character, custom/times of character print. adjust row space.

Font A: 12×24 dots, $1.50 \times 3.00\text{mm}$ (W \times H)

Simplify/Traditional: 24×24 dots, $3.00 \times 3.00\text{mm}$ (W \times H)

International code:

PC347 (Standard Europe) /Katakana/PC850 (Multilingual) /

PC860 (Portuguese) /PC863 (Canadian-French) /PC865 (Nordic) /

West Europe/Greek/Hebrew/East Europe/Iran/

WPC1252/PC866 (Cyrillic#2) /PC852 (Latin2) /PC858/IranII/

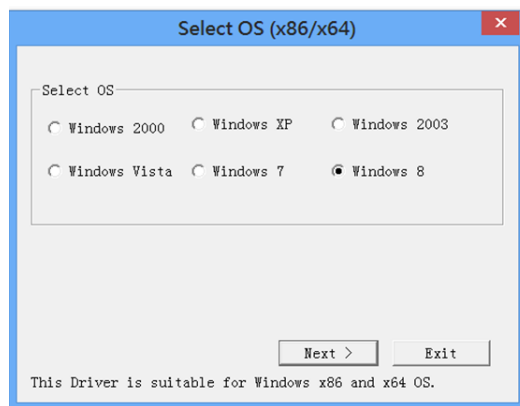
Latvian/Arabic/PT151 (1251)

Barcode mode:

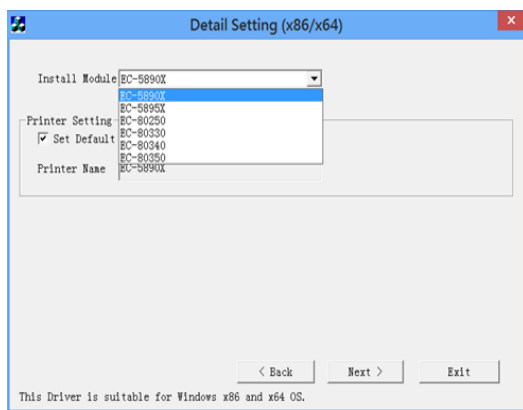
UPC-A/UPC-E/JAN13 (EAN13) /JAN8 (EAN8) /CODE39/ITF/CODABAR/
CODE93/CODE128

Driver Installation

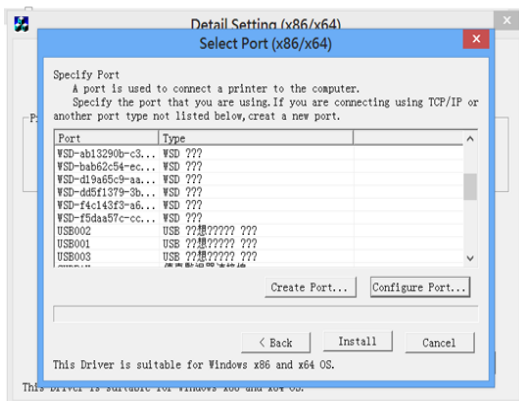
- a. Insert the bundled CD disk into the CD-ROM drive, in the CD-Rom menu, click DRV58EN V6.0G file to begin driver installation
Please choose the OS that matches with your computer system and press next.



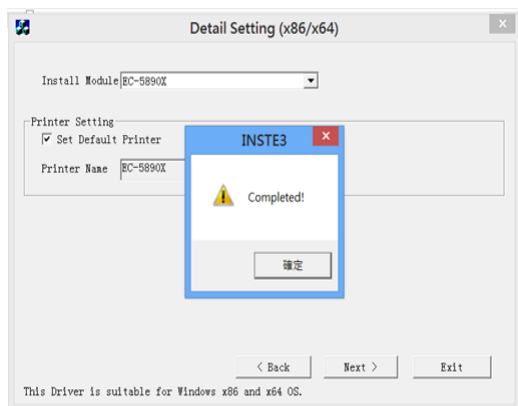
- b. Please select EC-5890X Series for Install module.



c. Select the correct interface and press 'Install'



d. Install complete and reboot your computer



Manufacturer: EC LINE

Thank you very much for using EC Line product
For service, please contact service@ecline.com.hk